

Wellington World of Wearable Arts - a 3 day New Zealand Tour



Wellington World of Wearable Arts - 3 days

After the success of the 2022 events we are pleased to offer our 2023 WoW Tours With 3 or 4 day trips available, plus a range of travel options, all including the best platinum grade seats, there's an option for everyone.

Departs Friday 29th September - for 3 days

- Day 1 we fly to Wellington mid-morning, lunch on arrival and then sight seeing and a visit to Wellington Zoo to see the big cats!
- Day 2 More sights of Wellington including St Pauls Cathedral, Te Papa museum, Weta Workshop tour, then the WoW show tonight.
- Day 3 we depart Wellington by coach to arrive back in Tauranga early evening.

29th Sep 2023

\$1750pp twin share

DAY 1 - After picking you up from home its just a short transfer to check in at the airport for our mid-morning flights south to Wellington. Arriving in the 'windy city' - but hopefully today not living up to its reputation, we collect our bags and head to our first destination, Wellington Zoo. Before touring the Zoo there is time for lunch at the aptly named REX Tremendous cafe. Suitably refreshed you can then spend the afternoon viewing the wide variety of animals plus their most recent addition, the two Snow Leopards.

Departing the Zoo for our hotel in the central city, we take a drive to a literal highlight of Wellington, Mount Victoria at 196m high offers truly stunning views (weather permitting) of the city, the harbour and surrounding region, even as far as the South Island. A twisty and narrow road leads us to the summit where we can enjoy the 360 degree views, a great photo opportunity, lets hope for good weather today.

Its then just a short drive to our hotel to check in, with plenty of time to relax and freshen up before we head out to dinner to a Wellington icon for a very special surprise evening!

DAY 2 - After a leisurely breakfast we head across town, past the Parliamentary precinct to the Old St Pauls Cathedral. One of New Zealand's great heritage buildings, Old St Paul's was built by the Anglican Church between 1865 and 1866 on what was originally the site of Pipitea Pā, a Māori settlement on Wellington's waterfront. After a short introductory talk from one of the hosts, you are free to look around this stunning building. An interactive exhibition helps visitors delve deeper into the building's finer details and fascinating history, plus there's a gift shop as well!

Next we head out to the district of the city often referred to as the 'Wellywood' of New Zealand, namely the Miramar Peninsula, location to much of New Zealand's movie industry. We will pass by the studios, backlots and offices of the world famous Sir Peter Jackson's film operation, as we head to Weta Workshop for a behind the scenes tour.

Our guide will explain how imaginary movie worlds are brought to life, right here in Wellington. You will see many movie special effects, from armour to weapons, creatures to costumes, make-up to miniatures, and more. Even if you are not a LOTR movie fan, you will still be impressed by the ingenuity and craftsmanship of the Weta team.

Our next destination is the Museum of New Zealand, Te Papa Tongarewa, which translates literally to 'container of treasures'. Time on arrival for you to have lunch at the museum cafe (your cost) before we join our guide for a private one hour tour.

What's Included:

- 3 days of touring
- 2 nights at the Wellington IBIS hotel
- Door to door service (Tauranga area)
- Full commentary by your guide
- All breakfasts and dinners
- **Platinum** Grade Tickets to WOW show
- Souvenir Program to keep
- Visit to Wellington Zoo
- Te Papa museum guided tour
- Weta Workshop behind the scenes tour
- Wellington City sights
- St Pauls Cathedral
- Train trip from Wellington to Hamilton

You will see:

- Stunning scenery throughout
- Wellington City sights
- Te Papa Museum
- Wellington Zoo and its big cats
- The Scale of War exhibition
- The WoW show from the best seats

Not included:

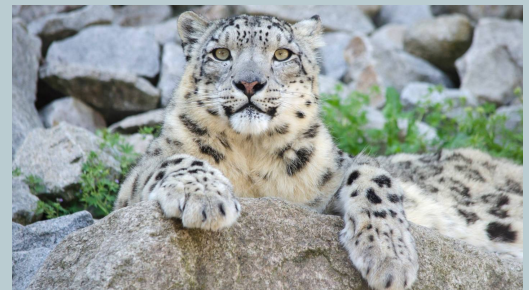
- The AIR NZ flight to Wellington (see note below regarding air fares)
- Any lunches unless specified*
- Morning/afternoon tea stops*
- Any alcoholic beverages with meals

Our informative and often entertaining guide will explore and explain our diverse natural environment, the history and culture of New Zealand, and what the national art collection has to say about life in New Zealand. You then have time to explore on your own, perhaps visit the very moving 'Scale of War Exhibition' which is another example of the work of Weta Workshops' stunning craftsmanship.

We then head back to the hotel to freshen up before an early dinner as this evening we have the main event - the amazing World of Wearable Arts Awards Show. The venue is just a short walk from our hotel and we have reserved platinum grade seats so we can really enjoy this amazing show from the best seats.

We also provide you with a Souvenir programs that you can keep to remind you of the fantastic stage extravaganza - which is a 2 hour spectacle or world class dance, music and of course the fashion of wearable art!

A Surcharge of \$250 is payable if you are travelling alone and require a single occupancy room.



Day 3 - Today we must return home, after what will have been a great few days exploring some of the best sights of our capital city, all topped of with the WoW show last night, no doubt you will still be re-living the spectacle today.

After an early breakfast its just a short coach ride the Wellington Station to board the Northern Explorer train for a spectacular scenic train journey home. Settle in to your reserved seats in the Scenic Class carriages, which offer panoramic windows to watch the New Zealand landscape roll by. The buffet car offers a good selection of food and drink for the journey but be sure to place your food orders early.

You will experience the extremes of New Zealand's scenery, from the sparkling Kapiti coast, the deep river valleys and white cliffs of Rangitikei, the Central Plateau with its three iconic volcanic cones dominating the desert plains of Tongariro National Park. You'll soar over the icy mountain streams of Ruapehu, before winding down the historic Raurimu Spiral into the King Country and the fertile farmlands of Waikato to Hamilton, where we depart the train mid afternoon, what a relaxing way to travel.

The Hinterland coach will be waiting at Hamilton for the transfer back to Tauranga by early evening.

Should you prefer to fly home instead of travelling by train, then we can arrange direct flights, additional costs may apply. Or you can return to Tauranga with the coach which will be heading north to meet clients from the train in Hamilton. Please contact us for details.

All Hinterland multi-day tours can be taken by clients from any region of New Zealand or Australia. Please contact us for details. Additional charges may apply.



Please note that due to the variations in air fares from Air New Zealand we do not include the flight tickets in the stated tour cost shown.

We will quote you a fare when you book and pay for your tour. These will be fully refundable flexible fares.

The earlier you book your tour the lower the cost of the flight will be.