

Wellington World of Wearable Arts - 3 & 4 day options - New Zealand Tour

Wellington World of Wearable Arts - 4 days

After the success of the 2022 events we are pleased to offer our 2023 WoW Tours With 3 or 4 day trips available, plus a range of travel options, all including the best **platinum** grade seats, there's an option for everyone.

- Depart Tauranga by coach to our first night in Palmerston North, sightseeing on the way.
- Day 2 we head to the Wairarapa to visit a wildlife sanctuary, then lunch and shopping in Greytown, and on to Wellington.
- Day 3 we spend seeing the best of the city's sights before the WoW show in the evening.
- Day 4 we board the Northern Explorer train to Hamilton, then a coach transfer home.

26th SEP & 3rd OCT \$2200pp twin share

What's Included:

- 4 days of touring
- 1 night at Copthorne Palmerston North
- 2 nights at the Wellington IBIS hotel
- Door to door service (Tauranga area)
- Full commentary by your guide
- All breakfasts and dinners
- Two lunches (Taupo and Greytown)
- **Platinum** Grade Tickets to WOW show
- Souvenir WoW Program to keep
- Mt Bruce-Pukaha National Wildlife Centre
- Te Papa museum guided tour
- Weta Workshop behind the scenes tour
- Wellington City sights
- Northern Explorer train to Hamilton

You will see:

- Stunning scenery throughout
- Wellington City sights
- Te Papa and the Scale of War exhibition
- The WoW show from the best seats
- Greytown and the Wairarapa

Not included:

- Any lunches unless specified*
- Morning/afternoon tea stops*
- Any alcoholic beverages with meals

A Surcharge of \$400 is payable if you are travelling alone and require a single occupancy room.



DAY 1 - Leaving Tauranga we head south and make our first stop for morning tea (it's our shout) and a chance to get to know each other. Suitably refreshed we continue towards Taupo, for a short stop at Lava Glass, chance here to view the extensive range of glassware on display and stretch our legs before continuing our journey.

Lunch today is at a Taupo lakeside hotel where we have great views of the largest of New Zealand's lakes and the volcanic peaks in the distance.

After lunch we head across the dramatic Desert Road and onwards to our accommodation this evening in Palmerston North, with a mid-way stop at Taihape, famous as the gumboot throwing capitol of New Zealand. Tonight we will dine together at the hotel restaurant, having seen some amazing scenery on our travels today.

DAY 2 - After a lovely breakfast, we depart the hotel and head over a very scenic route to the Wairarapa. With the main highway through the Manawatu gorge still closed, we will have great views of the extensive windfarms that dominate the skyline as we head to the Mt Bruce-Pukaha National Wildlife Centre. Time here for a self guided walk to see the Mount Bruce Reserve, a restored forest and captive breeding site. The reserve is home to endangered wildlife such as brown kiwi, pāteke (brown duck), whio (blue duck), takahē, kōkako, kākā, orange-fronted parakeet, tuturuatu (shore plover), and tuna (longfin eels). Morning tea is available at the on-site cafe before we head to Greytown, our lunch destination today, just an hour away.

Greytown is a real gem of the Wairarapa region, the town has beautifully restored Victorian wooden buildings that house stylish and interesting specialty stores, boutiques, cafes and restaurants. Today we lunch at a local icon, the White Swan Hotel, or as locals call it, "The Swan" - This country hotel, set in the heart of Greytown, celebrates the best of what the Wairarapa has to offer, with great food and warm rural hospitality. Time after lunch for some retail therapy, or if you prefer just relax in the bar.

Suitably refreshed, relaxed and with credit cards maybe feeling the strain, we leave town for the short but certainly scenic drive over the Remutaka Hill and into Wellington, just an hour away, to our city central hotel, with plenty of time to freshen up before dinner.

This evening we head out to a Wellington icon for a very special surprise evening!

Day 3 - The main event - the day many have been waiting for, the amazing World of Wearable Arts Awards Show, but before the performance this evening we have some great sights planned for the day.

After a leisurely breakfast we head across town, past the Parliamentary precinct to the Old St Pauls Cathedral, one of New Zealand's great heritage buildings. The church was built by the Anglican Church between 1865 and 1866 on what was originally the site of Pipitea Pā, a Māori settlement on Wellington's waterfront. After a short introductory talk , you are free to look around this stunning building. An interactive exhibition helps visitors delve deeper into the building's finer details, plus there's a gift shop as well!

Our next destination is the Museum of New Zealand, Te Papa Tongarewa, which translates literally to 'container of treasures'. To make the most of our visit today, we have included a private one hour guided tour of the museum. Our informative and entertaining guide will show us some of the highlights of the museum and what the national art collection has to say about living in New Zealand. You then have time to explore on your own, visit the very moving Scale of War Exhibition and have a light lunch at one of the on-site cafes before we depart.

A literal highlight of Wellington is Mount Victoria, standing 196m high, it offers truly stunning views (weather permitting) of the city, the harbour and surrounding region, even as far as the South Island. A twisty and narrow road leads us to the summit where we can enjoy the 360 degree views, a great photo opportunity, lets hope for good weather.

Our final destination today before we return to the hotel, is to the 'Wellywood' district of the city, the Miramar peninsula, location to much of New Zealand's movie industry. We will pass by the studios, backlots and offices of the world famous Sir Peter Jackson's film operation, as we head to Weta Workshop for a behind the scenes guided tour.

Chance for us to discover how imaginary movie worlds are brought to life, right here in Wellington. Our tour shows how movie effects, from armour to weapons, creatures to costumes, make-up to miniatures, and more are all created. Even if you are not a LOTR movie fan, you will still be impressed by work going on right here in New Zealand.

We then head back to our hotel for an early dinner before we depart to see the World of Wearable Arts Award Show this evening, the venue is just a short walk from our hotel.

Please note: If you would prefer a day to yourself in Wellington to hit the shops or catch up with friends, you can opt out of the day time activities above on day 3 if you wish. Please advise when making your reservation.

Day 4 - Today we must return home, after what will have been a great few days exploring some of New Zealand's stunning landscapes and its capital city, all topped of with the WoW show last night, no doubt you will still be re-living the spectacle today.

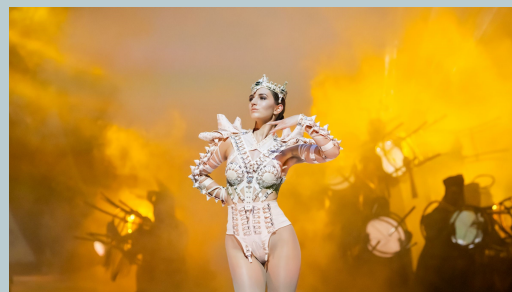
After an early breakfast its just a short coach ride the Wellington Station to board the Northern Explorer train for a spectacular scenic train journey home. Settle in to your reserved seats in the Scenic Class carriages, which offer panoramic windows to watch the New Zealand landscape roll by. The buffet car offers a good selection of food and drink for the journey but be sure to place your food orders early.

You will experience the extremes of New Zealand's scenery, from the sparkling Kapiti coast, the deep river valleys and white cliffs of Rangitikei, the Central Plateau with its three iconic volcanic cones dominating the desert plains of Tongariro National Park. You'll soar over the icy mountain streams of Ruapehu, before winding down the historic Raurimu Spiral into the King Country and the fertile farmlands of Waikato to Hamilton, where we depart the train mid afternoon, what a relaxing way to travel.

The Hinterland coach will be waiting at Hamilton for the transfer back to Tauranga by early evening.

Should you prefer to fly home instead of taking the train, or want to stay longer in Wellington, this can be arranged at additional cost. Please contact us for details.

All Hinterland multi-day tours can be taken by clients from any region of New Zealand or Australia. Please contact us for details. Additional charges may apply.



[Print this page](#)

[Book now](#)

[Click here for the 3 day tour option](#)